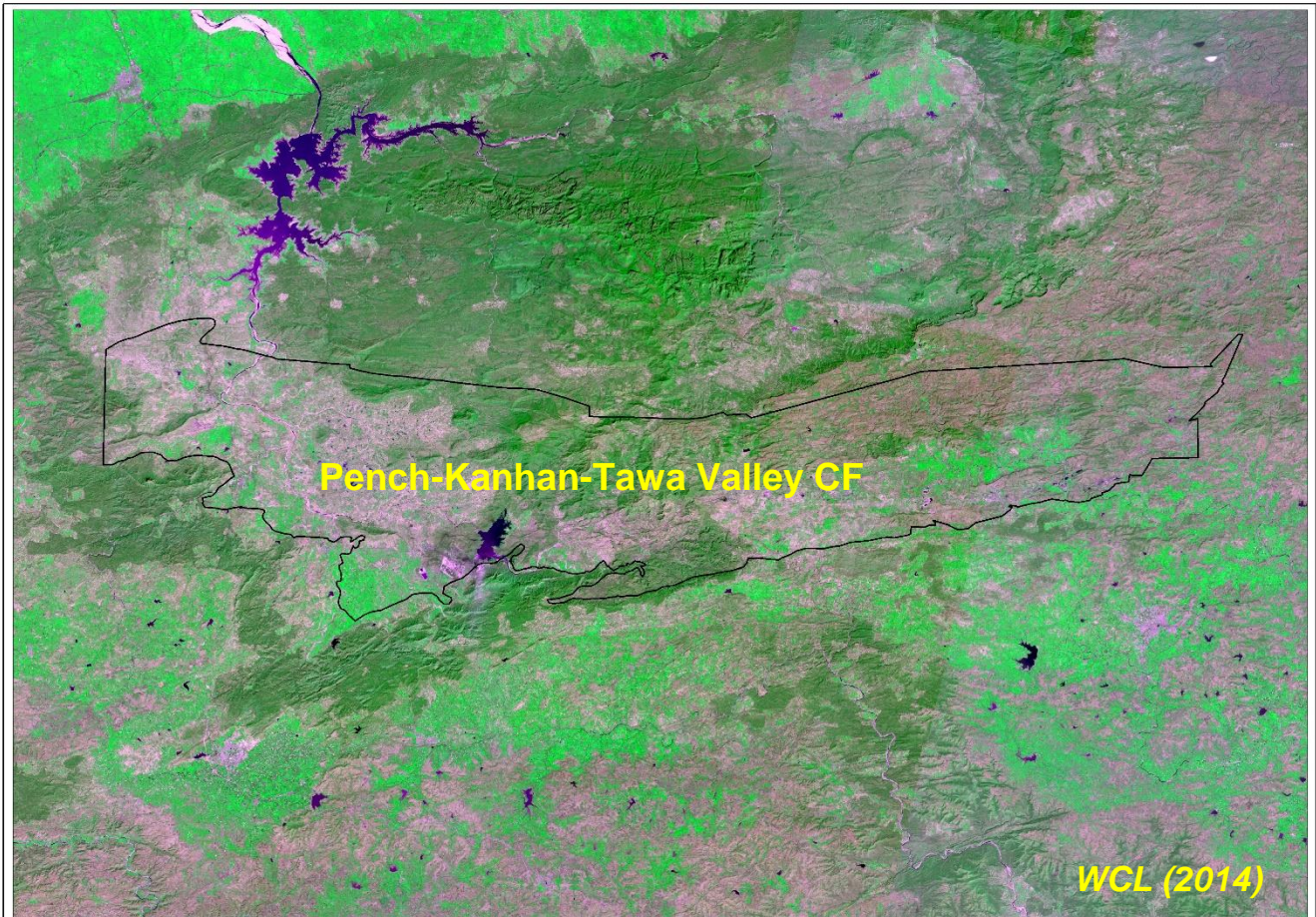


**REPORT ON
Land use/Vegetation cover Mapping of
Pench-Kanhan-Tawa Valley Coalfield
based on Satellite data for the year- 2014**



Submitted to
Western Coalfields Limited





Central Mine Planning & Design Institute Ltd.

(A Subsidiary of Coal India Ltd.)

Gondwana Place, Kanke Road, Ranchi 834031, Jharkhand

Phone : (+91) 651 2230001, 2230002, 2230483, FAX (+91) 651 2231447, 2231851

Website : www.cmpdi.co.in, Email : cmpdihq@cmpdi.co.in